

Annual Report 2024

**so!idar
suisse**

We fight for decent working conditions and democratic participation worldwide. In 80 projects and with campaigns we fight for social justice and against extreme inequality. Together with our local partner organisations, we eliminate social wrongs and create new prospects for disadvantaged people.



Dear Reader,

In 2024, Solidar Suisse continued its focus on working with people in disadvantaged regions of the world who are affected by climate change, such as in Bolivia, where an inferno raged through the Amazonian lowlands. The blaze destroyed ten million hectares of forest, an area two and a half times the size of Switzerland, and with it the livelihoods of the indigenous population. This conflagration was human-made, stoked by the greed of big landowners and the insatiable global appetite for soya, palm oil and beef. We provided immediate emergency aid by supplying the firefighters with drinking water, medication and protective equipment, and helped restore the devastated livelihoods of the local people.

Two ominous mega-crises are already making their presence felt today: the climate emergency and social inequality. That is why Solidar Suisse advocates for a socially just transition to a sustainable economy. It was with this goal in mind that we promoted fair employment for hundreds of thousands of people in 2024. The commitment of Solidar Suisse to fight inequality has also invigorated our new design, which is reflected in this report. Our new look invites everyone to join us.

Given the rapidly rising need for support of people living in the global south, which to some extent is the result of the climate crisis triggered by the global north, the Parliament's decisions on military spending (up!) and international cooperation (down!) are nothing less than scandalous. This national conservative shift also comes at the detriment of a critical civil society. And it is what personally drives me and the whole team at Solidar Suisse to step up our game even more!

Yours in solidarity,

Carlo Sommaruga
President of Solidar Suisse

Solidar in 2024	4
Commitment around the globe	6
Our main activities	7
Development cooperation	8
Humanitarian action	10
Campaigns	13
What we are also committed to	14
Solidar Suisse in statistics	15
Financial statements	16
Team	18
Organs & Collaborating Partners	20
Sponsorship and Networks	21
Thank you	22

Never giving up!



Astika Andriani

Coordinator of the platform for workers in southeast Asia

“One of the main priorities of the Solidar platform for workers is its support for gig workers. They are not recognised by the state as employees, which means they are not covered by employment law. They have no access to social security or healthcare. Nor do maximum working hours or minimum wage rates apply to them. And they have no trade union registration rights. So, they are setting up initiatives which organise practical matters such as rest areas where couriers can stop off to drink water and relax or crowdfunding for colleagues injured in accidents. And last year, despite everything, they were even able to establish a trade union. Now, they don’t just call themselves ‘gig workers’, but rather a ‘union for bicycle transportation workers’.”

80,242

marginalised workers in Bolivia, Bosnia, South Africa, Cambodia and other Asiatic countries were informed about their labour rights and given legal advice about how to enforce them.



Susanne Rudolf

Campaigns in Switzerland

“How can inequality be represented in a way that it can be grasped in just a few seconds? In 2024, we opted for provocative contrasting word pairings in striking typography. Our online and billboard campaign drew the viewers’ attention to the mechanisms of global exploitation and invited them to reflect on how people are exploited for profit, wages are suppressed, and rights are disregarded. The campaign came to the attention of one in seven people in Switzerland.”



Talha Paksoy

Programme manager for Bangladesh and Pakistan

“The devastation caused by the disastrous floods of 2022 can still be felt in Pakistan today. In Sindh, whole communities were destroyed and livelihoods swept away. In Islamabad, marginalised children find it difficult to access education, and Afghan refugees along the border live in insecurity with barely any support. Yet there is also evidence of great solidarity: Muslims and Hindus are rebuilding their villages shoulder to shoulder, just as they have lived together for generations. Our local partner organisations help families regain their independence by providing vocational training and financial assistance. We give local stakeholders a helping hand so that communities are better able to prepare for future disasters. As well as providing emergency aid, we also campaign for social protection and for community solutions, because lasting change comes from within.”

8,932

people affected by disasters or emergencies in Bangladesh, Pakistan, Turkey and Burkina Faso have been able to rebuild their lives.

36,276

individuals in Mozambique, Burkina Faso, Bolivia, Bosnia, Pakistan and Central America now have improved access to public services.



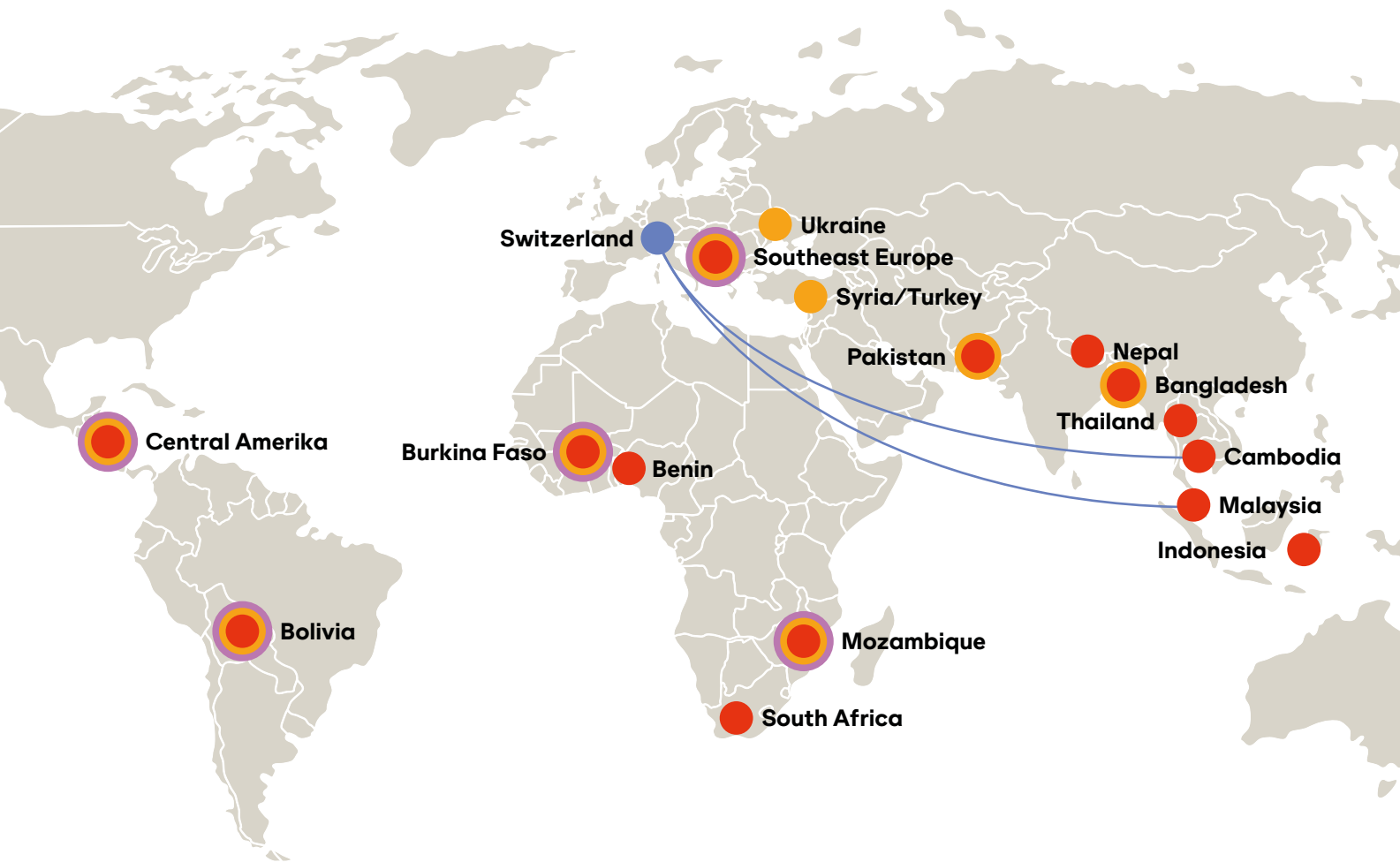
Alexandra Kelly

Lawyer at our partner organisation Foro de Mujeres in Honduras

“According to our observations, 231 women were murdered in Honduras in 2024. There are no official figures on femicides. No matter which government is in power, women continue to be murdered and experience sexual and physical violence – at home, on the street, at work. In 95 percent of femicide cases, no-one is ever sentenced. This sends out a message from the state that a man can rape or kill a woman with impunity. The consequences are deadly. Indigenous and black women suffer additional discrimination: they are also murdered for protecting natural resources. The women’s organisations which come together under the umbrella of Foro de Mujeres support women who bring charges against offenders so that they can be prosecuted. Pressure on our part has contributed to the few women-friendly laws and policies which currently exist.”

Where Solidar was actively involved in 2024

Alongside our local partners Solidar Suisse fights against inequality and for social justice. In various countries we advocate for decent working conditions, promote democratic participation, and respond to humanitarian emergencies. In Switzerland, we run campaigns to raise awareness about the consequences of our consumption patterns.



Our main activities

Development cooperation

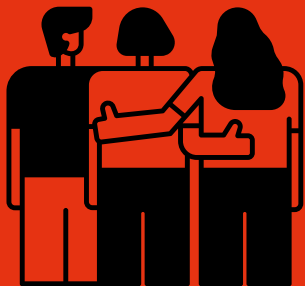
Decent work

Decent work is a human right, and an important instrument in the fight against inequality. That is why Solidar Suisse campaigns for living wages, social security, and the opportunity for workers to stand up for themselves – through trade unions, for example. We support workers in their fight against exploitative working conditions and offer young, disadvantaged people access to education and vocational training.



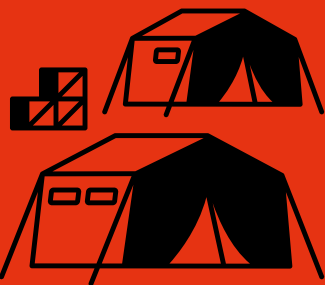
Democracy and civil society

Democratic processes flourish best if people are actively shaping their living environment. This requires a civil society which knows and asserts its rights. We support communities in laying out the foundations for participation and inclusion of the entire population, so that everyone has access to public services and resources without discrimination.



Humanitarian action

In the event of a natural disaster or armed conflict, we provide rapid support to those affected with essential goods and support sustainable reconstruction. We help set up sanitary facilities and improve long-term living conditions. In high-risk areas, we work to better prepare the population and local authorities for future natural disasters.



Campaigns

Only once rich industrial nations reevaluate their consumption and production practices will it be possible to eliminate precarious working conditions around the world. Solidar informs the Swiss population about exploitative global economic systems and raises awareness about the links between consumption, working conditions and inequality.



Fighting child labour in Bangladesh



Instead of going to school, even young children work in the dried fish processing industry in Bangladesh in order to contribute to their family's income.

Child labour is nothing new, but the impact of climate change and financial desperation are forcing increasing numbers of families to make impossible decisions about the costs of education and their children's health just to survive.

In Bangladesh, children work for many hours under the blazing sun, some as young as eight years old. On a visit to Chittagong and Cox's Bazar, I was able to see for myself what life is like for children working in the dried fish processing industry and in metalworking factories. In Chittagong shipbreaking yards expose entire families to extreme conditions, forcing children into hazardous work as their fathers dismantle enormous vessels. In Cox's Bazar, children gut and dry fish, their hands raw from salt exposure, while mothers labour nearby, carrying infants through the relentless heat.

Climate change increases the prevalence of child labour

Despite economic growth, inequality remains high in Bangladesh, and the collapse of the clothing industry during the Covid-19 pandemic forced thousands more children into often dangerous work. But climate change is also a factor in the growth of child labour. Rising sea levels are threatening coastal communities and thousands of people are being displaced by extreme weather events. As penetration by salt water and soil erosion lay waste to the agricultural industry, people are being forced to leave their homes in increasing numbers. They lose their livelihoods, and children have to work to ensure their family's survival. Children who went to school in their local communities now pick through rubbish dumps, sew clothes in poorly lit workshops, or work in fish or shipbreaking industries. In this way, climate change exacerbates poverty and makes the lives of families – who had already been struggling to make a living – even more difficult.

Breaking the vicious circle

Together with our local partners, we enable children to leave their exploitative employment. We create access to schools and vocational training and provide financial support for families so that children can swap the

factories and fish processing plants for classrooms.

One effective strategy involves an intensive learning programme to help working children find their way back into regular schooling. Teachers, often from the same communities, play a key role in providing the basic educational building blocks and restoring the children's self-confidence. And they offer safe spaces where children can be children again. We also create vocational trainings, e.g. for tailors or mobile phone repairers, as well as helping families find potential alternative sources of income. The introduction of kitchen gardens enables parents to satisfy their family's need for vegetables and herbs and cover other expenses from their income, as well as shelter their children from the need to engage in dangerous employment.

Shrinking resources threaten our success

However, the increasing challenges are offset by shrinking funding for international cooperation. The Swiss Agency for Development and Cooperation (SDC) is withdrawing from Bangladesh, leaving a critical gap behind at a time when support is urgently needed. A holistic approach is essential if genuine progress is to be made. Governments must pass laws against child labour, companies must introduce ethical practices, and the global community must invest in long-term solutions tackling financial hardship as well as helping with the adaptation to climate change. Solidar Suisse belongs to a climate consortium supported by SDC which integrates child protection into a comprehensive policy of strengthening climate resilience. It is crucial that displaced families are given an opportunity to rebuild their lives again in a sustainable way as this would help eliminate the conditions which make child labour unavoidable. If we fail to act, more children will be forced to work rather than go to school and build a better future for themselves.

Report from
10 vor 10 on child
labour in Bangladesh
(in German)



Text: Talha Paksoy, Programme Manager for Bangladesh

Fighting forest fires in Bolivia rapidly and sustainably

Solidar Suisse responded quickly to the devastating fires which raged across Bolivia's Amazonian lowlands for four long months in 2024. This was possible thanks to links with Solidar projects aimed at creating income opportunities. This integrated approach will also help us prevent and respond to future fires.

Ten million hectares of land were destroyed by the forest fires in the Amazonian region of Bolivia – an area two and a half times the size of Switzerland. Forests, pastures and nature reserves were all reduced to ashes. The fires broke out for a variety of reasons, but they were all human in origin. Big landowners burn large areas for pasture or soy cultivation, small-scale farmers use fire to clear their land before planting, while land speculators burn down trees to illegally mark out plots for sale. In the extreme drought conditions that affected the Amazonian lowlands last year, such fires can easily spiral out of control. They spread alarmingly quickly, stoked by winds and temperatures of up to 38C. By September, large parts of Bolivia were under a thick blanket of smoke which extended as far as the Andes mountains. It was not until October, after more than four months, that the authorities finally succeeded in bringing the fires under control – with the help of many volunteer firefighters, young people and adults

from the affected areas, as well as foreign experts and fire-fighting aircrafts.

Rapid response thanks to existing projects

When the Bolivian government declared a state of emergency in early September, Solidar Suisse was immediately able to mobilise emergency aid. One of the reasons for our quick response was the presence of existing projects in Guarayos, one of the worst affected provinces. These projects engage young adults in community-level action and provide support for small-scale entrepreneurs in indigenous communities, helping them increase their income whilst adopting an environmentally friendly, sustainable approach. One such entrepreneur is Bartolina Marayai, a young woman who manufactures cosmetic products from the inedible nuts of the cusi palm. Cusi palms are sustainable and have the potential to secure the livelihoods of the local population. "Our work," says Bartolina Marayai, "demonstrates to people the hidden potential of the nature we are so carelessly destroying." She sells her soaps, creams and shampoos as far afield as the city of Santa Cruz, 600 kilometres away.

An impact that goes beyond emergency support

The existing network of grass-roots organisations and local authorities was activated to provide emergency assistance. Help was provided quickly and without red tape by the consortium with Helvetas, aided by a financial contribution from the Swiss Agency for Development and Cooperation (SDC) and in coordination with the Swiss Humanitarian Aid



Bartolina Marayai collecting the cusi nuts she uses to make cosmetic products in her small business venture and to secure her livelihood.

Unit in Peru, which quickly dispatched experts to the scene.

The project team secured the urgent supply of drinking water, disinfected drinking water with chlorine, and repaired damaged springs and water systems. Medical supplies were also distributed in coordination with the authorities and local emergency committees – including eye drops to relieve stinging eyes and medication for people with respiratory issues. Even as emergency aid was being delivered, the team was looking beyond the immediate crisis. For instance, small-scale farmers received seed so that the November sowing could go ahead on schedule. Solidar Suisse also supplied protective equipment for the local firefighters, some of whom had previously faced the flames without any protection whatsoever. They

are now better equipped to deal with future incidents.

Our work in the lowlands of Bolivia showed that key preconditions can significantly increase the chances of successful humanitarian action: a strong presence on the ground, a well-functioning network, trusted relationships with partner organisations and authorities, and a coordinated approach, which links emergency aid with long-term stimuli for development. With this foundation in place, it may even be possible to prevent the repetition of a similar disaster in 2025.

Text: Joachim Merz, Programme Manager for Bolivia

Interview with Bartolina Marayai and tour of her soap-making workshop (in German)





A woman sprays chemicals on a palm oil plantation in Sabah without any protective clothing.

Focus on campaigns

Is a sustainable palm oil production possible?

The global sale of palm oil continues to increase unchecked, but the workers do not benefit. Solidar Suisse is supporting the struggle for better working conditions on plantations through its research and an international conference.

The fact that workers barely profit from the palm oil boom is largely due to a lack of will on the part of the industry: companies like Nestlé, Barry Callebaut and others relying on the RSPO certification promise to produce and use 'sustainable' palm oil, but a study by Solidar Suisse in 2024 showed a very different reality – especially when it comes to wages. In Sabah, Malaysia, there is an enormous gap between what would constitute a living wage and what workers actually earn.

Poverty wages in a palm oil hotspot

Migrant workers make up most of the workforce in Sabah's plantations. Research shows that a living wage in the region is 2,540 ringgits (508 Swiss francs), while actual wages range from 800 to 1,800 ringgits (160 to 360 Swiss francs). The workers not only face high food prices in the remote plantations, but also bear the cost of health and education, as undocumented workers and their families are denied access to public services. Solidar Suisse presented Nestlé and Barry Callebaut with these findings, as both companies source palm oil from these plantations. To its credit, Nestlé responded immediately and in-

vited us for a talk. Whether the multinational food company will take serious measures to improve wages is something we will be keeping a close eye on in the future.

The battle for sustainable palm oil production

But exploitative working conditions are not the only problem associated with palm oil production. Monocultures destroy primary forest, pesticides and fertilisers pollute the environment, and indigenous communities are ousted from their land. But what would environmentally friendly, socially equitable palm oil production look like? That was the question facing the second international conference 'Just Transition in the Palm Oil Industry,' which was organised by Solidar Suisse in December together with HEKS, Pro Natura and TPOLS (the Transnational Palm Oil Labour Solidarity Network) in Bern. "It is important that not only workers, but also ecological and indigenous groups contribute their personal perspectives," says TPOLS co-ordinator Rizal Assalam. "Because there is a link between issues relating to land rights and those relating to employment. Together we are stronger." The conference brought stakeholders from palm oil producing countries together and connected them with activists from the global north – where there is also a fight for improved working conditions in the food industry. It was a milestone event positioning the power of global solidarity with global business interests.

Text: Christian Eckerlein, Campaigns

Read the complete palm oil report here (in German)



What we are also committed to



Anniversaries

50 years in Burkina Faso, 40 years in Mozambique

Last year, Solidar celebrated two anniversaries. We began our training and literacy programme for small-scale farmers in Burkina Faso in 1974. Since then, our work has included multilingual education, vocational training for young people, and projects to combat dangerous child labour and strengthen civil society. Cooperation in Mozambique began in 1984, with the support for the Health Ministry's printing office and a latrine project. Today, we focus on providing emergency and reconstruction aid, democratic participation to strengthen public services, employment rights, and vocational training for young people.



Participation

Kosovo: Let's debate change

Our local partner organisation 'Teach for Kosovo' familiarises vocational trainees with democratic processes. The young people work on projects together, with the top six ideas being selected and supported through to implementation. This approach encourages the participants to achieve things collectively which they might not have managed on their own. In 2024, an award was given to a group of vocational students in Istog with a plan to redesign their schoolyard break area. They replanted the space and designed new benches, creating an attractive place to relax and chat.



Humanitarian action

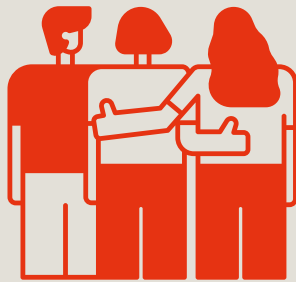
Ukraine: protection against violence

Solidar became actively involved in Ukraine shortly after the Russian attack three years ago. We addressed the most urgent needs of the most vulnerable population groups (such as internally displaced people, women, children, and people with disabilities). We also repaired housing and provided financial assistance to help people cope with the freezing winter conditions. In 2024, the focus shifted to developing networks whose centres and mobile teams offer protection against violence and psychosocial support. Our work helps strengthen local civil society organisations enabling them to build sustainable structures in the long term, and counter social tensions within communities.

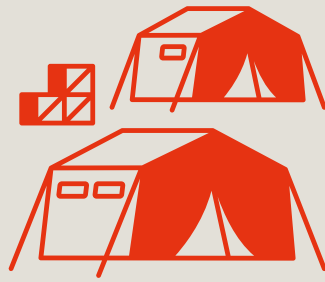
Solidar Suisse in statistics

Commitment around the globe

22,895,540 CHF

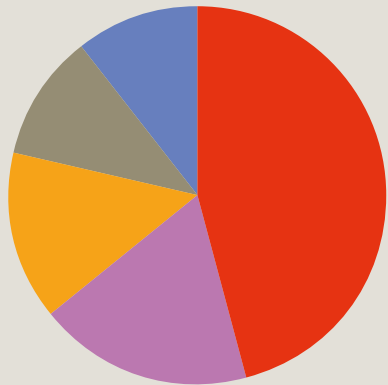


**Development
cooperation**
12,125,506 CHF



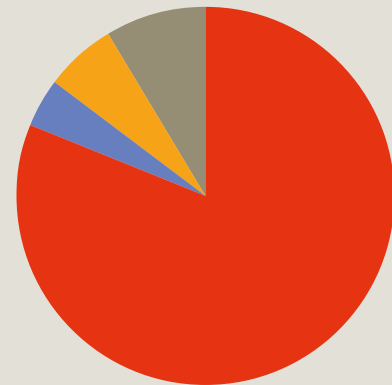
**Humanitarian
action**
10,770,034 CHF

Expenditure per continent (CHF)



● Africa: 10,539,619
● Asia: 4,202,165
● South-Eastern Europe: 3,302,996
● Latin America: 2,445,994
● Middle East: 2,404,766

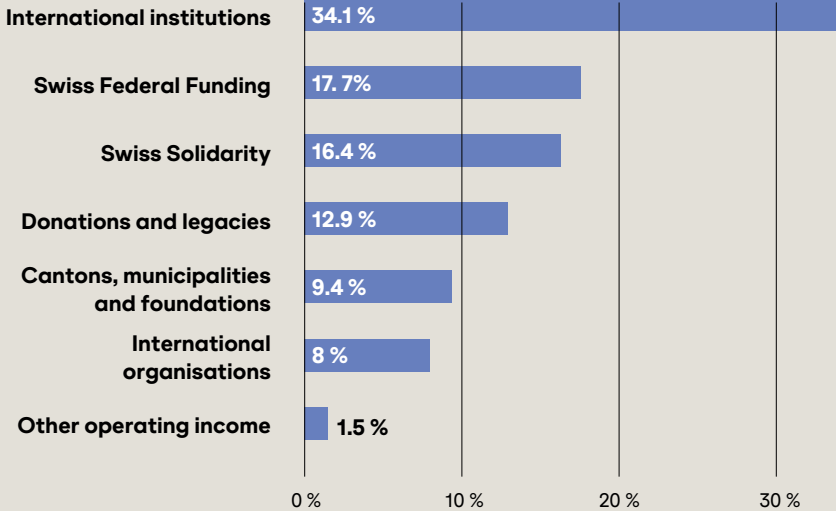
Use of operational funds



● International Programme* : 81.3 %
● Campaigns : 4.1 %
● Administration costs : 6.1 %
● Fundraising : 8.5 %

* International cooperation and humanitarian action including programme coordination and support

Origin of operational funds



You will find more detailed information on page 16.

Comment

In the 2024 financial year, we continued to experience the period of consolidation which began the year before, recording a turnover of some 29 million francs. Roughly one quarter of our income came from donations and grants supplied by private individuals and institutions. We would like to take this opportunity to offer them our sincere thanks for placing their trust in our work and for their generous support in the fight against inequality and for social justice.

Our operating expenditure amounted to 31.18 million francs, of which 22.9 million francs were spent on our international cooperation programmes. Overall, 53 percent of resources were channelled into long-term development cooperation, and 47 percent into humanitarian aid, in particular reconstruction following the devastating earthquake in Turkey and Syria as well as support for people in Ukraine. Expenditure on programme monitoring in Switzerland came to 2.45 million francs.

Some 1.29 million francs were spent on information and awareness-raising campaigns on topics relevant to development policy. In terms of operating expenses, 85.4 percent of resources were allocated to programme work, while 14.6 percent went on administrative expenses (6.1%) and fundraising (8.5%).

The balance-sheet total was 20 percent down on the previous year, amounting roughly to 22.8 million francs as per 31.12.2024 – largely as a result of the outflow of liquid assets and short-term receivables.

The organisation’s capital amounted to 9.1 million francs as per 31.12.2024, corresponding to a reserve ratio of 29.3 percent (previous year 32.7%) measured as a proportion of the total operational expenditure.

Solidar Suisse’s financial statements are prepared in accordance with Swiss GAAP FER recommendations. This financial overview is an excerpt of the annual financial statements audited by Balmer-Etienne AG as part of its ordinary audit and found to be correct.



The complete financial statements including the audit report and further details on Solidar Suisse’s performance and situation report can be found in the Financial Report at www.solidar.ch/en/financialreport

Balance Sheet

(CHF)

Assets	31.12.2024	31.12.2023
Current Assets		
Cash and cash equivalents	6,220,902	11,641,421
Accounts receivable on deliveries and services	20,517	22,747
Other short-term accounts receivable	1,043,174	2,322,002
Net assets in programme countries	675,088	637,974
Accrued income and pre-paid expenses	1,501,331	1,397,173
Total	9,461,012	16,021,317
Fixed Assets		
Financial Assets	4,971,957	4,153,515
Tangible fixed assets	345,050	310,549
Real estate property	7,526,217	7,651,648
Intangible assets	502,954	391,061
Total	13,346,179	12,506,773
Total Assets	22,807,190	28,528,090

Liabilities	31.12.2024	31.12.2023
Short-term liabilities		
Liabilities on deliveries and services	167,224	185,774
Other short-term liabilities	918,877	922,352
Pre-payments	5,008,062	8,303,170
Accrued expenses and deferred income	242,432	397,569
Total	6,336,595	9,808,865
Long-term liabilities		
Long-term interest-bearing liabilities (mortgages)	2,150,000	2,150,000
Other long-term liabilities	335,672	575,813
Total	2,485,672	2,725,813
Total liabilities	8,822,267	12,534,677
Fund capital	4,842,398	5,921,136
Total liabilities and fund capital	13,664,665	18,455,814
Capital of the organisation		
Paid-up capital	100,000	100,000
Restricted capital		
Foreign-exchange offset reserve	304,152	304,152
Real estate renovation reserve	940,468	990,391
Collective agreement (CLA) reserve	60,000	60,000
Solidar Suisse unrestricted capital	7,725,827	8,602,264
Solidar Suisse Genève unrestricted capital	12,079	15,470
Total	9,142,525	10,072,276
Total liabilities	22,807,190	28,528,090

Statement of operations

(CHF)

Income	2024	2023
Income from donations		
Unrestricted donations and legacies	3,002,510	3,368,747
Restricted donations and legacies	359,873	901,897
Project contributions (restricted)	2,747,549	2,617,530
Project contributions, Liechtenstein Development Service LED (restricted)	550,000	550,000
Membership fees and supporter contributions (unrestricted)	386,896	310,941
Total	7,046,828	7,749,115
Income from service provided (restricted)		
Swiss Federal funding	5,124,052	6,509,143
Funding from various organisations	16,390,483	15,114,378
Total	21,514,535	21,623,521
Other operating income	436,607	368,794
Total operational income	28,997,971	29,741,431

Expenses	2024	2023
International programme		
Latin America	2,445,994	3,787,320
Africa	10,381,426	10,576,578
Eastern Europe and Middle East	5,865,955	5,179,517
Asia	4,202,165	3,373,116
Programme coordination and support	2,453,799	2,420,803
Total	25,349,339	25,337,334
Swiss programme – Information and awareness raising	1,286,721	1,220,636
Head Office		
Administration costs	1,892,321	1,814,594
Fundraising and advertising	2,655,942	2,313,347
Total	4,548,263	4,127,941
Total operational expenditure	31,184,323	30,685,911
Operating result	-2,186,353	- 944,481
Financial result	-8,518	5,136,701
Real estate property result	172,773	493,291
Other result	13,609	0
Result before fund movements	-2,008,489	4,685,512
Movements in funds	1,078,738	- 28,329
Allocations	-3,657,422	- 4,139,957
Use	4,736,161	4,111,628
Annual result before allocations to the capital of the organisation	-929,751	4,657,183
Allocations		
To unrestricted capital	879,828	- 4,657,183
To restricted capital		
Foreign-exchange offset reserve	0	0
Real estate renovation reserve	49,923	0
Annual result after allocations	0	0

Team



Bodies

Board of Trustees Solidar Suisse

Carlo Sommaruga, President, since 2018
Sabin Bieri, since 2020
Dieter Bolliger, since 2014
Martine Docourt, since 2024
Tamara Funciello, since 2020
Pepo Hofstetter, since 2018
Fabio Höhener, since 2021
Joachim Merz, since 2015
Reto Wyss, since 2020

Felix Gnehm, advisory role, since 2017

The president and other members of the committee are elected for a four-year term. They can be re-elected twice.

Interest commitment

Relevant vested interests and mandates of the board members are listed in the financial report: www.solidar.ch/en/financialreport

Board of Trustees Solidar Suisse Genève

Valery Bragar, President, since 2019
Léa Fridrich, since 2021
Aurélie Friedli, since 2019
Felix Gnehm, since 2018
Anastasia Ponomareva, since 2022
Tamina Wicky, since 2019

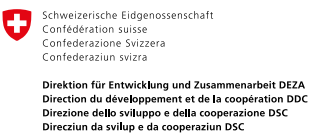
Auditor

Balmer-Etienne AG
Bederstrasse 66, 8002 Zürich

Joint Committee

Beat Gsell, President
Employer and employee representation is defined according.

Collaborating Partners



The Swiss Agency for Development and Cooperation (SDC) of the Federal Department of Foreign Affairs supports the development cooperation programmes of Solidar Suisse with an annual contribution.



Solidar Suisse is a member of Swiss Solidarity, the Swiss media's humanitarian aid fundraising platform. Swiss Solidarity supports many Solidar humanitarian action projects.



The Principality of Liechtenstein's official development cooperation agency Liechtenstein Development Service LED is a Solidar Suisse partner in the Burkina Faso programme.



A number of the programmes run by Solidar Suisse receive funding from the Directorate-General for International Partnerships of the European Commission.



Solidar Suisse is member of the Fédération vaudoise de coopération. Through this alliance of NGOs the public authorities of the canton Vaud finance development projects.



Solidar Suisse is member of the Fédération genevoise de coopération. Through this alliance of NGOs the public authorities of the canton Geneva finance development projects.



Solidar Suisse bears the ZEWO-seal which distinguishes charities using donations economically, effectively and for the designated purpose.

Sponsorship and Networks



The Swiss Federation of Trade Unions SGB and the Social Democratic Party of Switzerland SP are partners of Solidar Suisse. In 1936 they created Swiss Labour Assistance SLA, which in 2011 became Solidar Suisse.



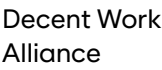
SOLIDAR brings together over 50 NGOs based in 26 countries with the shared values of solidarity, equality and participation. Solidar Suisse is a member of this European network created to advance social justice in Europe and worldwide, primarily in the fields of education, humanitarian cooperation, social affairs and international cooperation.



Solidar Suisse is a member of the SLA network: Ten independent regional SLA associations provide programmes for unemployed people, immigrants and refugees. Solidar Suisse is related to them through a common history and common partners.



Solidar Suisse is a member of Alliance Sud, the umbrella organization of leading Swiss Development NGOs.



The Decent Work Alliance of Solidar Suisse and Brücke Le pont supports people all over the world in their struggle to improve their working conditions, overcome poverty, and be able to live a life of dignity and empowerment.

Thank you!

Public sector

- Canton of Appenzell Ausserrhoden
- Canton of Schaffhausen
- Canton of Basel-Stadt
- Canton of Graubünden
- Canton of Bern
- Canton of Thurgau
- Canton of Uri
- Canton of Zurich charitable Fund
- City of Aarau
- City of Illnau-Effretikon
- City of Rapperswil-Jona
- City of Schlieren
- City of St. Gallen
- City of Wallisellen
- Danida – Danish International Development Agency
- Embassy of the Kingdom of the Netherlands in Burkina Faso
- Enabel – Belgian Development Agency
- European Union
- Fédération genevoise de coopération (FGC)
- Fédération vaudoise de coopération (Fedevaco)
- German Society for International Cooperation (GIZ)
- Municipality of Baar
- Municipality of Freienbach
- Municipality of Muri bei Bern
- Municipality of Oberägeri
- Municipality of Riehen
- Municipality of Risch
- Municipality of Saanen
- Municipality of St. Moritz
- Inter-American Development Bank (IDB)
- Liechtenstein Development Service (LED)
- SIDA – Swedish International Development Cooperation Agency
- Swiss Agency for Development and Cooperation (SDC)
- Swiss lottery, Canton of Glarus
- Swiss lottery, Canton of Obwalden
- Swiss Solidarity
- USAID
- Zurich urban development

Private institutions

- Aktion Deutschland hilft
- Annette ten Zeldam Stiftung
- AWO International
- Bessere Zukunft Stiftung
- Christa Foundation
- Däster-Schild Stiftung
- Dora Aeschbach Stiftung
- Dr. Ernst-Günther Bröder Stiftung
- Fondation Aletheia
- Fondation Marcel et Ulo Zwingmann
- Fondation Paul Dubrule
- Fondation Philanthropique Famille Sandoz
- Fondation Pierre Demaurex
- Fondation Sauvain-Petitpierre
- Foundation for the Third Millennium
- Laudes Foundation
- Leopold Bachmann Stiftung
- Linsi Foundation
- Luisa und Walter Stettler-Kaufmann Stiftung
- Medicor Foundation
- Migros Aid Fund
- Olof Palme International Center
- Reformed Church of Baden *plus*
- SAH / Solidar Personal-Solifonds
- Solidarity Center
- Stiftung Érgata
- Stiftung Erika und Andres Gut
- Stiftung Temperatio
- Syndicom
- Unia
- UNICEF
- Unionen Stockholm
- Volkshilfe

We would like to extend our sincere gratitude to our donors and members for their support. We also want to thank the public and private institutions which co-financed our work in 2024. It is thanks to them that we have been able to fight extreme inequality.

Imprint

Published by Solidar Suisse

Quellenstrasse 31
8005 Zürich
044 444 19 19
kontakt@solidar.ch

Chemin des Mouettes 4
CP 1151
1001 Lausanne
021 601 21 61
contact@solidar.ch

Editorial office: Katja Schurter
Translation: Intertext

Copyright:

p. 3: Maurice Haas
p. 4/5: Notice Design, Maurice Haas, Solidar Suisse
p. 8: Solidar Suisse
p. 11: Solidar Suisse
p. 12: Solidar Suisse
p. 14: Solidar Suisse

Design: Notice Design, Zürich

Print: Mattenbach AG, Winterthur

Solidar Suisse
Quellenstrasse 31
CH-8005 Zürich
+41 44 444 19 19
kontakt@solidar.ch
solidar.ch
IBAN: CH67 0900 0000 8000 0188 1

**so!idar
suisse**